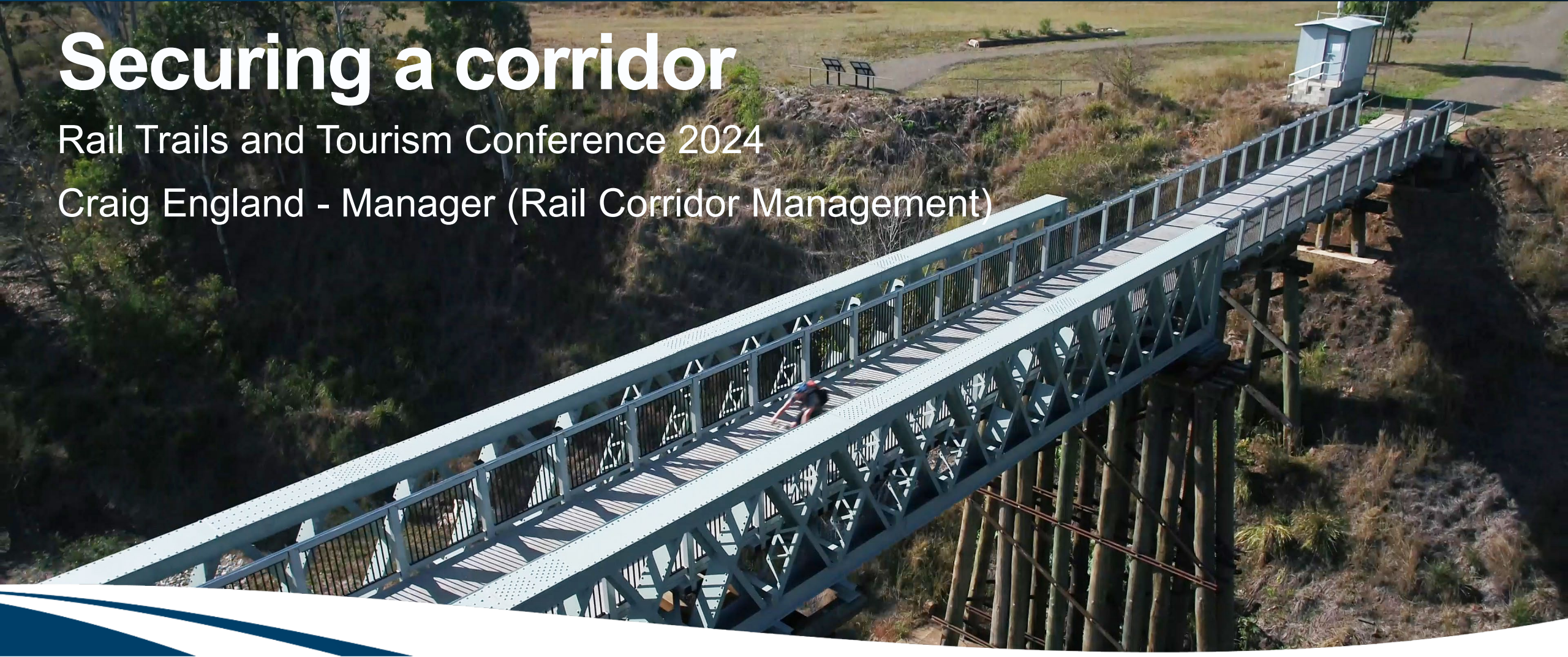


# Securing a corridor

Rail Trails and Tourism Conference 2024

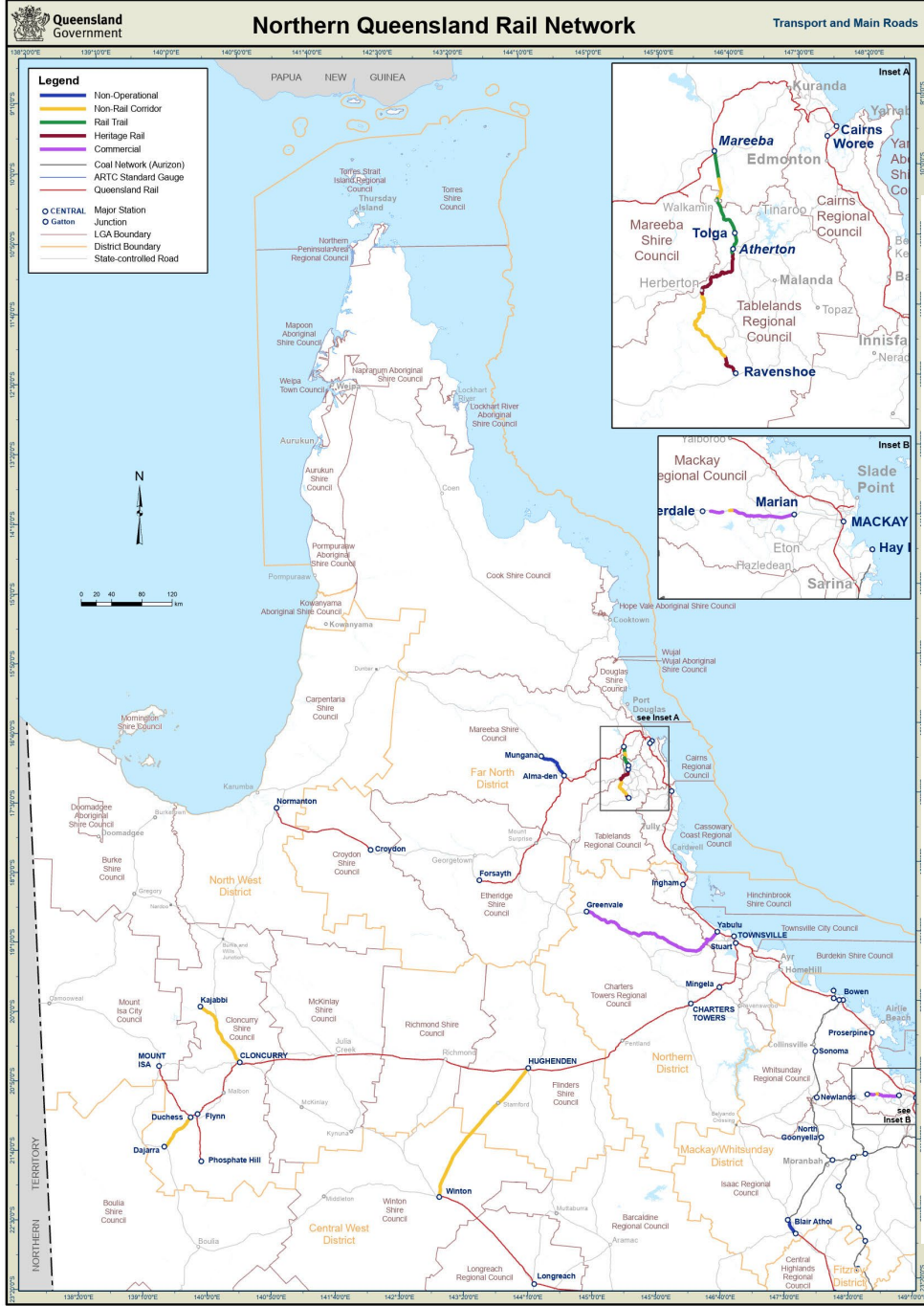
Craig England - Manager (Rail Corridor Management)



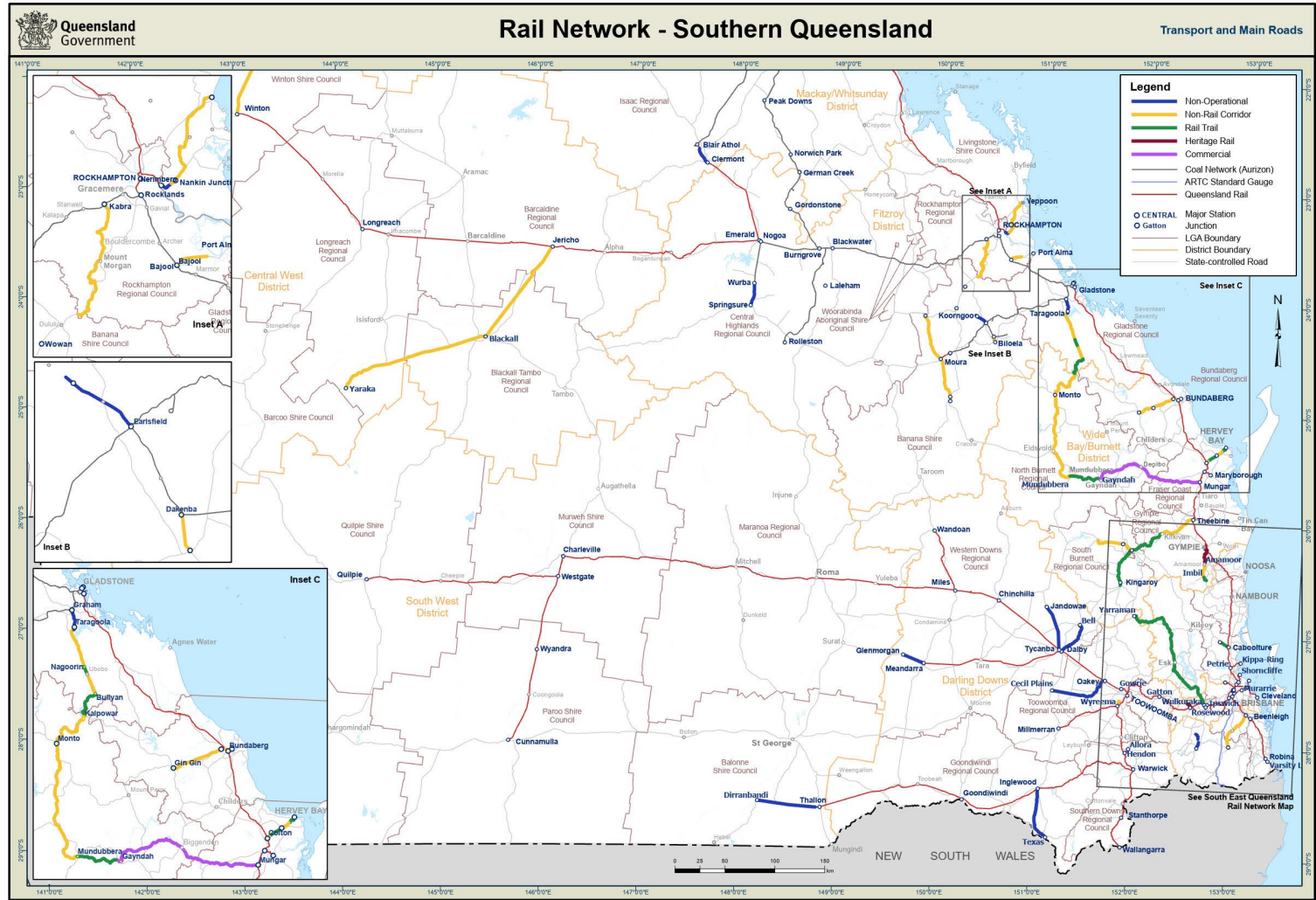
# Securing a corridor

- The Department of Transport and Main Roads – why is the department involved?
- Tenure of rail corridors
- Operational v Non-operational v closed rail corridors
- TMR has a dedicated team to ‘manage’ the BVRT and support the planning, development and management of other rail trails across the state





# Queensland's rail network



© The State of Queensland, 2023  
Disclaimer: While every care is taken to ensure the accuracy of this data, the State of Queensland and/or QR Limited makes no representations or warranties about its accuracy, reliability, completeness or suitability for any particular purpose and disclaims all responsibility and all liability (including without limitation, liability in negligence) for all expenses, losses, damages (including indirect or consequential damage) and costs which you might incur as a result of the data being inaccurate or incomplete in any way and for any reason.

© The State of Queensland, 2023  
Disclaimer: While every care is taken to ensure the accuracy of this data, the State of Queensland and/or QR Limited makes no representations or warranties about its accuracy, reliability, completeness or suitability for any particular purpose and disclaims all responsibility and all liability (including without limitation, liability in negligence) for all expenses, losses, damages (including indirect or consequential damage) and costs which you might incur as a result of the data being inaccurate or incomplete in any way and for any reason.

# The Journey

## Closed Rail Corridor to Rail Trail

- Queensland Rail surrenders its interest/rail infrastructure removal
- Key stakeholder engagement / Community group
- Addressing adjoining land owners' concerns
- Council support for rail trail



# Different management arrangements

- TMR
- Councils
- Local community groups
- Combinations

Advantages and Challenges



# Risks

## Competing priorities

- Other land use
- TMR acting commercially in the first instance

## Encroachment

- Adjoining owners generally have many years of not having a 'neighbour'



# Risks

## Rail trail saturation

- The burden of capital costs on Councils
- Transition from feasibility studies to construction

## Costs/Funding

- Maintenance Funding – vegetation & repairs
- Capital improvements
- Competing rail trails



# Encroachment and adjoining landowner issues

- Fence or not to fence?
- Grazing
- Access
- Public utilities
- Competing adjoining owners
- Mining leases



**Thank you and stay  
connected**

[www.tmr.qld.gov.au](http://www.tmr.qld.gov.au)

**Craig England**  
[craig.d.England@tmr.qld.gov.au](mailto:craig.d.England@tmr.qld.gov.au)  
[bvrt@tmr.qld.gov.au](mailto:bvrt@tmr.qld.gov.au)  
**M: 0438 708 069**

