

Coronation Hall

2 SHORT STREET, SOMERSET DAM QLD 4312



VENUE HIRE

Coronation Hall

2 SHORT STREET, SOMERSET DAM QLD 4312

OPEN FOR
INSPECTION BY
APPOINTMENT



Take a step back into yesteryear - Coronation Hall was originally a picture theatre used by builders and their families during the construction of the dam wall at Somerset Dam. The venue is in its original condition and boasts country character coupled with high ceilings and open spaces. The venue is in the perfect location (close to Lake Somerset) and suitable for any vintage or rustic themed event. The venue contains trestle tables and pews and a modern amenities block.

HALL FEATURES

- Capacity for up to 200 people
- Large double door access
- Wheelchair access
- Outdoor grassed area
- Stage



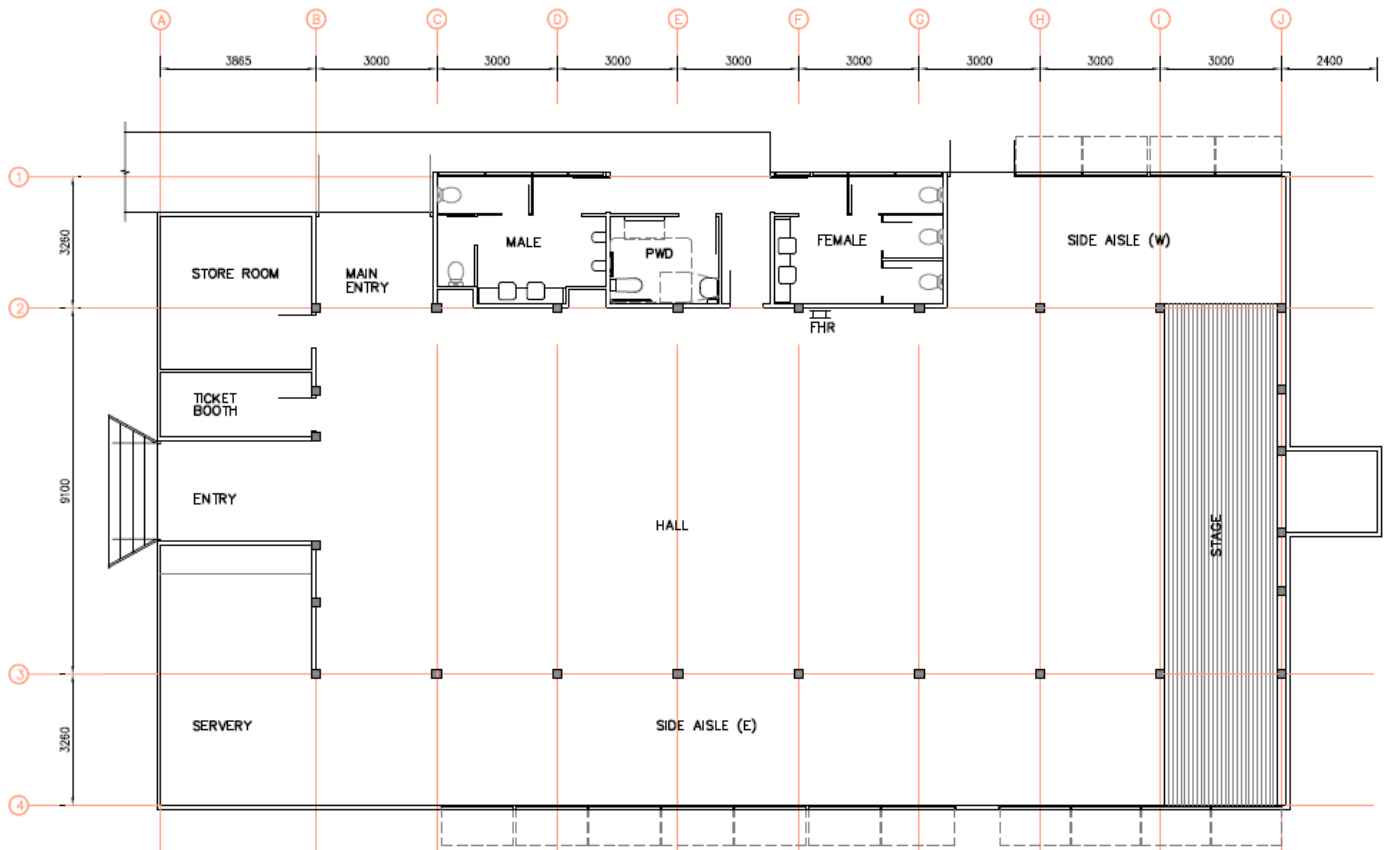
For bookings and enquiries
(07) 5424 4000
mail@somerset.qld.gov.au
www.somerset.qld.gov.au



This venue is owned and managed by Somerset Regional Council

Coronation Hall

FLOOR PLAN



GENERAL MEASUREMENTS

- Void behind stage - 1780mm wide, 2600mm deep, 2240mm high
- SRC signage outside hall - 1200mm x 1200mm
- Concrete in front of double doors - Front 6000mm (angled back to steps), area in front of steps 3800mm, side 3450mm

For bookings and enquiries
(07) 5424 4000
mail@somerset.qld.gov.au
www.somerset.qld.gov.au

Coronation Hall

INVENTORY LIST



AVAILABLE AT VENUE

- 12 x church pews (seat 72 people)
- 2 x trestle tables 5500mm (L) x 900mm (W)
- 9 x trestle tables 3600mm (L) to 3800mm (L) x 800mm (W)
- Trestle tables seat approximately 160 people
- 1 x laminate table 900mm (L) x 900mm (W)
- 3 x timber tables
- 2 x service trolleys
- 1 x 900L commercial double door fridge
- 1 x 185L freezer
- 8.8L Domestic Urn
- Cafe chairs - 13 available
- Cafe tables - 5 available
- Outdoor powerpoint and water source available for food van and/or cold room
- Access to toilets
- Parking on site

For a
detailed
inventory list
contact
Council

For bookings and enquiries
(07) 5424 4000
mail@somerset.qld.gov.au
www.somerset.qld.gov.au

Coronation Hall

SCHEDULE OF FEES

BONDS AND DEPOSITS

ITEM	FEE
Non refundable week day deposit (per day of use)	\$45.00
Non refundable weekend deposit	\$500.00
Refundable bond (GST only applies on default)	\$500.00

PRIVATE (INDIVIDUALS OR GROUPS)

ITEM	FEE
Hire charge for the whole or any part of the weekend block which is defined as any consecutive three Friday, Saturday, Sunday and/or Monday	\$1,550.00
Hire charge for Tuesday night, Wednesday night or Thursday night use	\$171.00
Hire charge for Tuesday day, Wednesday day or Thursday day use	\$171.00

OTHER RATES

ITEM

Please contact Somerset Regional Council for all other enquiries regarding hiring Coronation Hall.



For bookings and enquiries
(07) 5424 4000
mail@somerset.qld.gov.au
www.somerset.qld.gov.au

*Fees included in this brochure are current up to and including 30 June 2022.



This venue is owned and managed by Somerset Regional Council



Coronation Hall

2 SHORT STREET, SOMERSET DAM QLD 4312